

List of wheels

MABI Logo / MABI Clou

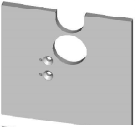

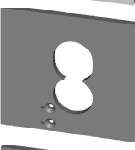
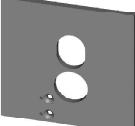
MABI®



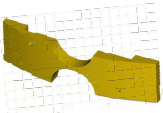
UID CHE-105.990.305 MWST



Plates:

	Plate with a land For Clou: Art.-Nr. 2-0182 (Standard)	Plate with a land For Logo: Art.-Nr. 2-0182 (Standard)
	Plate without a land For Clou: Art.-Nr. 2-0184 (Standard)	Plate without a land For Logo: Art.-Nr. 2-0184 (Option)
	Plate without a land For Clou: Art.-Nr. 2-0185 (Option)	Plate without a land For Logo: Art.-Nr. 2-0185 (Option)
	Plate with a land For Clou: Art.-Nr. 2-0186 (Standard)	Plate with a land For Logo: Art.-Nr. 2-0186 (Option)

Incl. in basic equipment: T-piece guide for MABI Clou & MABI Logo



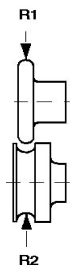
Standard: T-piece guide for MABI Clou & MABI Logo
Art.: Clou - 0278

Tail - adapter for MABI Clou & MABI Logo



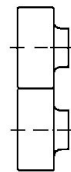
Option: Installation material for the tail-roll included.
(Tail-roll isn't included in the price)

Incl. in basic equipment for MABI Clou & MABI Logo



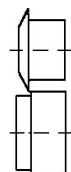
Swaging wheels

Nr. 0 Nr. 1 Nr. 1.4 Nr. 2 Nr. 3 Nr. 4 Nr. 5



Tail Rolls

Nr. 52 K Conic 0-20 mm



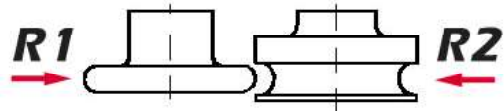
Removal Rolls

Nr. 70

Swaging wheels MABI Clou & MABI Logo

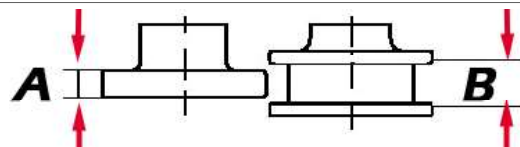
- Standard delivery
- Delivery on order
- Available in 4 weeks

Swaging wheels (case hardened steel)



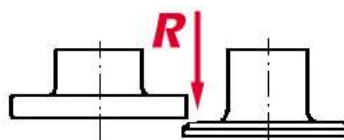
	Nr.	R1	R2	Remarks	Price EUR
■	0	1	1,7	to 9312-Nr. 5	
■	1	1,5	2,2		
■	1,4	2	2,6	to 9312-Nr. 6	
■	2	2,8	3,2		
■	3	3,5	4		
■	4	4,2	5		
■	5	4,5	5,3	to 9312-Nr. 8	
▨	6	5,2	5,7	to 9312-Nr. 7	
▨	7	5,5	6,3	to 9312-Nr. 9	
□	8	6	6,8		
□	9	6,5	7,3		
□	10	7	7,8		
□	11	8	9		
□	12	9	10		
□	13	10	11		

Casebeading Rolls (case hardened steel)



	Nr.	A	B	Remarks	Price EUR
▨	30	6,5	9	casebead, standard	
□	31	5,5	8		
□	32	7	9,5		
□	33	7,5	10		
□	34	9	11		
□	35	9,5	12		
□	38	12,5	15		
□	36	6,5	9	with ornamental bead 20 mm	
□	37	6,5	9	with ornamental bead 50 mm	

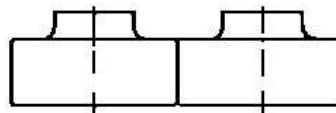
Fouldramming Rolls (case hardened steel)



	Nr.	Remarks	Price EUR
	40	standard Part „R“ toothed	
	41	Part „R“ untoothed	

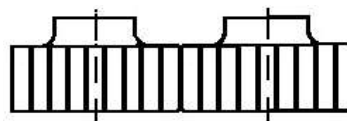
This rolls are special for Nr. 30, 36 and 37

Tail Rolls (case hardened steel)



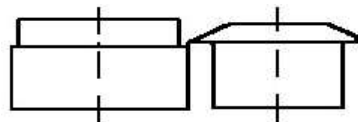
	Nr.	Remarks	Price EUR
	50	Tail 8-12 mm / 50K = conic	
	51	Tail 12-15 mm / 51K = conic	
	52K	Tail 20 mm / 52K = conic	
	53	Tail 0-20 mm only with special plate	
	54	Tail 10 mm	
	55	Tail 15 mm / 55K = conic	

Crimping Rolls (case hardened steel)



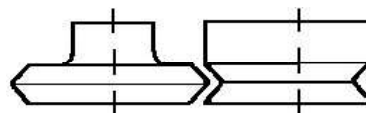
	Nr.	Remarks	Length mm	Price EUR
	60	teeth/ 5 cm= 6	50	
	61	teeth/ 5 cm= 6	20	
	Clou 30	fine teeth	50	
	Clou 30/20	fine teeth	20	

Removal Rolls (case hardened steel)



	Nr.	Remarks	Price EUR
	70		

Fold Rolls (case hardened steel)



	Nr.	Remarks	Price EUR
	75	For double and simple fold	